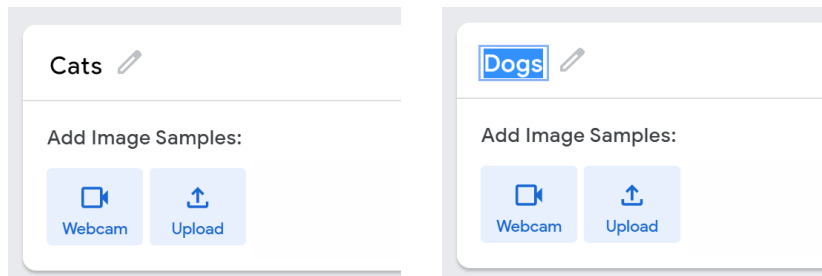


01 Getting started

- Go to <https://teachablemachine.withgoogle.com/train/image> in a web browser
- Rename the two classes to **“Apple”** and **“Tomato”**.



02

Introduction to AI > Activities > Fooled > Working Files > Apples



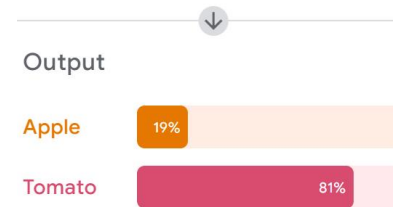
- Find images of **“Green apples”** and **“Red tomatoes”** (at least 6 of each) and save them to your computer.

Challenge

In this project you will learn about how machine learning can make mistakes.

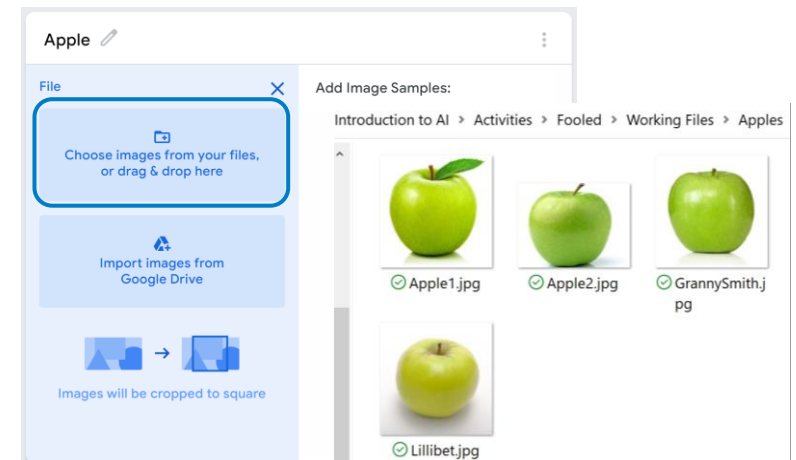
You'll train a machine learning model to recognise pictures of apples and tomatoes.

Then you'll see how you fool it so that it confuses the two.



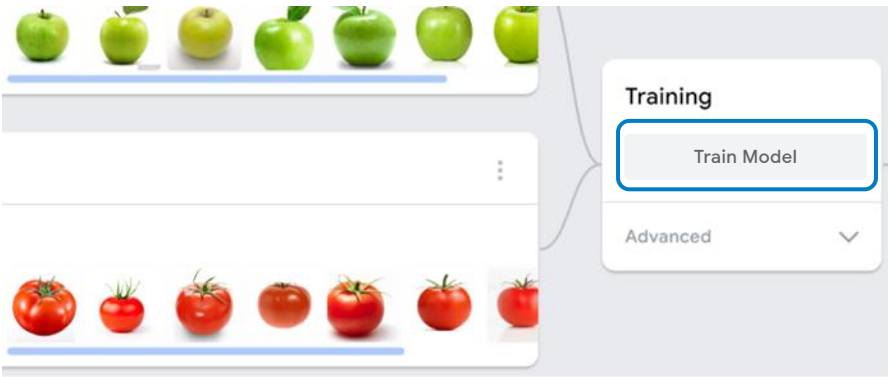
03

Upload examples to each class.

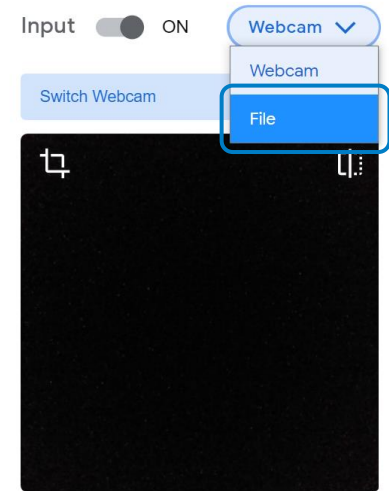


Fooled

04 • Click on **“Train Model”**.

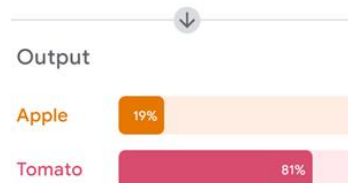


05 • Select **“File”** from the input drop down menu.



06 • Upload an image of a **“Red apple”**.

Your machine learning model might have thought that the red apple was a tomato. There are other patterns that might have helped it get some correct, like the shape of the leaves.



07 If a supervised learning algorithm has insufficiently diverse training data (e.g., only apples which are red), then it is prone to misclassifying items that deviate from those narrow training data. **Can you help it do better?**

